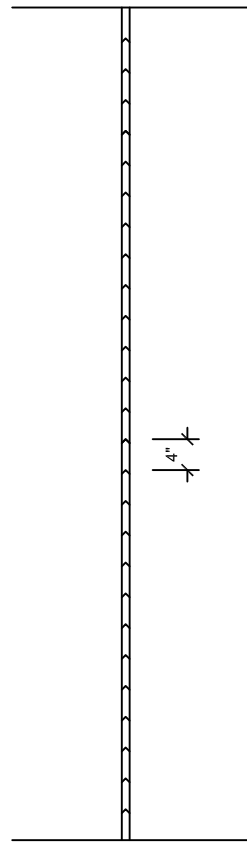


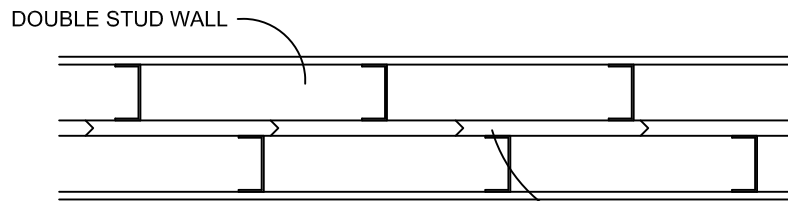
CORNER DETAIL



1" X 4" X 12" LEAD BRICK
ALL TYPICAL IN FIELD

SECTION

NOTE: 11 GA. 2" X 2" STEEL TUBES
WILL WORK AS REPLACEMENT STUDS



1" X 4" X 12" LEAD BRICK

PLAN

In addition to the brick size, a 1/8" extra space should be provided between the two rows of studs/steel tubes to ensure easy installation.



RADIATION PROTECTION PRODUCTS, INC.
1000 SUPERIOR BLVD., SUITE #310, WAYZATA, MN. 55391
1-888-RING-RPP